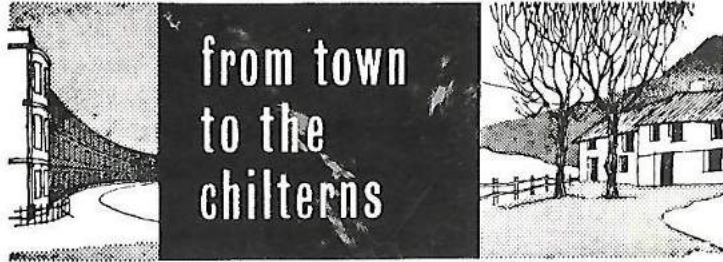


FOR ALL MATTERS OF PROPERTY



from town
to the
chilterns

BECKETT SON & CO.

E. BECKETT, F.A.I.

CHARTERED AUCTIONEER & ESTATE AGENT

Auction, when advisable, of Houses—
Contents—Land—by normal treaty otherwise.

Management of property investments.
Planning applications.

four offices:

46 STATION RD., NORTH HARRGW
HARrow 6111

29 COLLEGE RD., HARROW
HARrow 5216

219 WATFORD RD., SUDBURY COURT
ARNold 5242

The MOOR PARK ESTATE OFFICE
Northwood (NL) 24131

Printed by Lock & Co., 66 Lower Road, Harrow, Middlesex.

WEALDSTONE FOOTBALL CLUB



Handbook

Season 1970-71

2/-

**Come now and discuss your
holiday arrangements**

Winter Sports — Winter Sunshine — Winter 1970-71
or something just a little different

Theatre, coach, air, rail and sea bookings

Mon-Thurs 8.30—6.30 Sat 9.00—6.00 Fri 9.00—9.00

or take advantage of our

discuss your holiday at home service

**AGENTS FOR ALL THE LEADING
TOUR OPERATORS**

KENTON TRAVEL LTD.

**175 Kenton Road, Kenton,
Harrow, Middx.**

Telephone : 01-907 4433

JAX GARAGE LTD.

**CANNING ROAD,
WEALDSTONE**

Telephone : 01-427 6267/8

**FULL RANGE OF NEW MORRIS CARS
ALWAYS IN STOCK WITH COMPLETE
SERVICE BACKING**

Wealdstone Football Club

FOUNDED 1900

Members of the Football Association and Isthmian Football League.
Affiliated to the Middlesex and London Football Association.

President : H. A. LUCK

Chairman : J. Rogers

Deputy Chairman : F. W. Harbud

Life Vice President : J. Holt

Hon. Secretary : K. E. Wiltshire

8 Imperial Way, Kenton, Harrow, Middx. 01-204 5252

Hon. Assistant Secretary :

T. F. Verrall

Hon. Assistant Treasurer :

B. Henderson

Hon. Treasurer :

D. C. Lyons

Hon. Press Secretary :

H. J. Benjamin

Hon. Match Secretary :

J. C. Ward

Hon. Reserve Team Secretary :

L. Boyle

Hon. First Team Secretary :

R. Kelly

Hon. Ground Secretary :

G. B. Guildford

Hon. Secretary Social Club : M. A. Emerson

Committee

A. J. W. Adams, E. Allaway, R. Axford, L. Boyle, M. A. Emerson,
R. D. Guildford, G. S. Harrison, J. Harrison, D. Helen, J. Howland
J. H. Luscombe, J. C. Ward, W. C. Waterlow

Coach : Alan Humphries

Assistant Coach : Edgar Francis

Hon. Club Doctor : Dr. N. L. Yhap

Hon. Physiotherapist : J. Spark

Hon. Trainers : B. Croucher & F. Welch

Colours : Royal Blue with White Facings

Ground & Headquarters :

Lower Mead, Station Road, Wealdstone, Harrow, Middx.
01-427 2840

From the Chair

The stage is set, and the curtain has been rung up on another episode, in the story of the game to which we are all committed. What of the future? The fascinating thing about this game we love is the glorious uncertainty which surrounds it. At this stage of the season every club is a cup winner or League champion, but when the course is run, to a few will go the glittering prizes of success and to the many, the heart-searching wonderings of what might have been!!

I should need a crystal ball to say with any certainty what our reactions will be nine months hence, but of one thing I am certain — whatever the fortunes of the coming season, Wealdstone will hold its place among the leading clubs in the amateur world. This fact is assured by the dedication of your officials, committee-men, playing and training staff.

We did not have too much cash to play with during the close season, but expenditure has been wisely made, and unremitting effort by a small band of volunteers will ensure that our ground retains its high place in sporting arenas.

Our new coach is brimming with confidence and optimism, and the enthusiasm of our playing members is infectious.

And so we face a new season with cautious optimism. May it prove successful, but above all — may it prove enjoyable, and let us all hope that in the days to come we will look back on season 1970-71 as one which brought us many hours of pleasure.

JACK ROGERS, Chairman.

Private Parties Going Places Go . .



As pioneers of Luxury Coach Travel, we should be pleased to arrange your Tour or Outing in its entirety. Our fleet of luxury coaches (28-51 seaters) is the finest in North-West London.

We can arrange meals and hotel accommodation and can obtain tickets for theatres and sports outings.

Private Hire Suggestions List available on request

VALLIANT GRONSHAW LTD.

HARROW COACH STATION

331 Pinner Road, Harrow, Middx.

Telephone: 01-427 0101

The Wealdstone Football Club

Lower Mead, Station Road, Harrow

Our ground is situated in the centre of Harrow, the town that is famous for being the home of the Public School that bears its name. We are at the rear of the A.B.C. Cinema in Station Road on a ground that is known as "Lower Mead".

It is four minute's walk from the Euston Main Line Station of Harrow and Wealdstone and approx. six minute's walk from the Metropolitan and Marylebone Line Station of Harrow-on-the-Hill. Five buses numbers 114, 158, 182, 186, 286 stop outside the ground and a further five buses and one Green Line stop within four minute's walking distance from the ground. So that you can see we are well supplied with transport facilities.

The ground capacity is 17,000 accommodated on concrete terracing, the highest gate ever recorded being 13,500. We can claim that we enjoy one of the highest average gate attendances of Amateur Football.

With the completion of the new stand at the Cinema end we can accommodate 5,850 people under cover (including 850 seated). The ground is completely enclosed by a ten feet high, brick, concrete and steel fencing, the playing pitch is also completely enclosed by a three and a half feet high iron railing.

The playing surface is now recognised as one of the finest in football circles, with a complete herringbone drainage system that can clear the heaviest of rainfalls within two hours. The measurements of the pitch are of International Standard.

We were one of the first Amateur Clubs to install floodlighting and have just spent a further £3,000 on improvements. With eight pylons at an average height of sixty feet containing twelve 1,500 watt lights on each, thus giving a maximum lighting power of 144 kilo-watts (or 144,000 watts) we can claim more lighting power than most Amateur Clubs, and indeed even greater than quite a large number of professional clubs.

The main stand, with dressing rooms underneath is at present being replanned and modernised. For although at present the two dressing rooms are old, they are nevertheless clean, with a treatment room attached to each, and each have their own re-tiled dip-bath, toilets and showers. Three tea bars serve the needs of the spectators around the ground and a Social Club complete with Dance Hall (to hold 250 persons); two fully licensed bars, and a kitchen that is equipped to cater for 150 persons, (seated for a four course dinner), is there to cover for the social needs of the members.

Our two private car parks hold 160 cars (one serving as flood-light asphalt training ground during training nights) and there is also a municipal car park adjacent to ours that can cater for a further 80 cars.

The ground known as "Lower Mead" is freehold property, owned by the Wealdstone Football Club, administered by a committee voted in by its members, and controlled by a trusteeship.

Plans are now being drawn up to modernise the main stand to include new dressing rooms; greater seating accommodation; an administration block; Boardroom; better refreshment facilities; a vice presidents bar whereby its members can watch the game whilst enjoying a drink; a gymnasium; and if permission can be granted we hope to include a licensed bar for spectators.

In view of the high cost of this project (between £30,000 to £40,000) the whole programme will be planned to build in three stages with the new dressing rooms as the number one priority.

KEN WILTSHIRE,
Hon. Secretary.

Telephone: 427 6311 (15 Lines)

Wm. McKEOWN LTD.

TURF ACCOUNTANTS

Members of Victoria Club, N.S.L. & T.G.S.

2-6 CANNING ROAD, WEALDSTONE,
HARROW, MIDDLESEX.

Looking Backwards . . .

A Review of Season 1969/70

In an honest appraisal of last season, we cannot claim that it was one of our peak seasons for performance. Rather, one must say, it was a season of honest endeavour, sprinkled with several successes, but at the same time, shadowed by unexpected reversals. Maybe the uncertainty which, at times, prevailed in the background, was reflected in results, but whatever outcome of our various competitions, it was a season in which the players at our disposal gave of their best, and if, on occasions, their best was not good enough to savour the sweet taste of success, at least they tried — and you can ask no more of any man.

In the Isthmian League we finished up with an average result — tenth position, and whilst this was not quite as good as we might have hoped, it cannot be rated a bad position, having regard to the eminent clubs who finished beneath us. Two notable successes spring to mind in recalling this campaign — the 6-1 trouncing we gave to Bromley last August when they acted as our hosts, and the sweet 3-2 defeat we inflicted on our rivals from Enfield when they visited us in March.

Our fortunes in the various Cup Competitions was somewhat brighter — apart from our sad exit from the London Senior Cup, at the hands of Ilford (who shaded us out by 2 goals to 1 at Newbury Park). In the F.A. Cup we reached the Divisional Final, accounting for Bletchley, Aylesbury United, Banbury United and Dunstable Town on the way. It is some satisfaction to recall that three of these victims are professional outfits. We finally succumbed to the "old enemy" from Enfield by the solitary goal of the match played at Enfield in November.

In the F.A. Amateur Cup we were defeated in the last round before the quarter finals by Wycombe Wanderers, who at that time were riding on the crest of a wave, and looked to be possible winners at Wembley, as well as serious contenders for League honours. Again we bowed out by the only goal of the game. Two exits by the narrowest of margins!

In the Middlesex Senior Cup we progressed to the final — a two-legged encounter with Enfield. In the first meeting we gained a two goal advantage, which we held until the second half of the second match at Enfield. Again we were forced to concede defeat by the narrowest of margins, ultimately taking the smaller share of the five goals scored.

The Wembley Memorial Trophy brought us our only tangible success of the season, when we reversed the tables on Wembley after losing to them at home in the first leg. Truly indeed a season which could be likened to the curate's egg!

Away from the playing arena we had our troubles too. We parted company with Dave Underwood, our coach, in mid-December — just before our commencement of the Amateur Cup campaign. Howard Moxon, our skipper, nobly stepped into the gap, and guided our destiny for the rest of the season. Several established players left gaps in our ranks when they decided to seek pastures new. Many of our reserve players were called upon to fill the breach at short notice, and it is heartening to realise that their groundwork and preparation had not been in vain. They did not let us down.

To sum up, it was a season which presented a challenge. Possibly the defensive atmosphere which has predominated football for the past few seasons finally rubbed some of the gloss from the game, and brought in its train a few frustrations. Perhaps it was a season which we took stock of the position — paused in our efforts to wrest the prizes from the grasp of others and set our sights on new targets. Let us hope it served merely as a "breather", and that we can look back next season to more tangible rewards for the efforts of all those who served the game.

The Hayday Group FOR YOUR Printing

HAYDAY PRESS General printing, Letterpress and Lithography

HARROW REPRO LTD Reproduction typesetting and IBM Selectric. Typeface list available

AP PRINTING PROCESSES LTD Plastic and Metal Display plates and General printing

P & B PUBLISHING CO Booklets, Stationery items, Advertising postcards, etc.

37-39 MASONS AVENUE, WEALDSTONE, HARROW, MIDDX · 01-427 7087

SALES & PRODUCTION: A J Robinson Perry, FRSA Graham J Perry, managing

Player of the Year

1969-70 David Bullock

Each season The Leadbetter Trophy, so named to perpetuate the memory of one of our most popular Secretaries, whose association with the Club was so tragically curtailed by his sudden death a few seasons ago, is awarded to the Player of the Year. The award is not necessarily made to the player who has achieved the highest personal honours in the game. The yardstick of assessment is the player's contribution to the Club of his choice by his loyalty, example to others, and general approach both on and off the field of play.

It is not often that the Committee can reach their decision speedily in this award, because the strength of amateur football is not necessarily in its star players, but in that wealth of players in which the game abounds, who pledge their loyalty to a Club, and then honour that loyalty, regardless of personal setbacks and disappointments.

Such a player is Dave Bullock. He was not assured of a team place throughout last season. Very often he found himself wearing the No. 12 shirt, with a chance that he would play only in the dying minutes of a game. Alternatively, he played knowing full well that if the coach made a change, he was the player destined for "the chopper". Obviously he would have preferred to have been a regular selection for the whole ninety minutes, but this natural reaction never detracted from the effort he placed into his game. He cheerfully accepted the coach's dictates in these tactical switches, and both on and off the field gave his fellow players a fine example of the better qualities of the game. We were indeed proud to regard Dave as an ideal ambassador for the Club.

Dave received his presentation at the Club's annual dinner, and it was typical of him that not knowing he had been singled out for this award, he attended the function for a short time, although his wife was unfortunately, at the time, in hospital, and his visit could only be brief.

Fortunately Dave is still with us, and has opened the new season in convincing manner. We wish him well for season 1970/71 and hope we can count him among our ranks for some time to come.

Newspaper Rumours

by Harry Benjamin, Hon. Press Sec.

It is very disconcerting and embarrassing at times to read in the local and (sometimes) national press, various items of news which is supposed to be happening here at Wealdstone, and which I as the Press Officer know nothing about, nor does the club itself.

We often get various complaints from the supporters, regarding these articles in the press, and I would therefore like to stress, that this season in our new enlarged 12 page programme, we will endeavour to tell our supporters everything that is happening at Wealdstone whether the news be good or bad.

We have formed a programme committee, consisting of 4 committee-men and myself, and it is our resolve to hold nothing back in the way of news and various happenings, and if anything that is not correct appears in any newspaper, we will immediately refute it in our programme.

We will be having many new and interesting features for our supporters to read whilst waiting for the players to come on the field, and also we would like people to write in to us giving their ideas to help improve the programme.

Now that we will be having many more mid-week games this season, we hope that our supporters will bear with the programme committee, in trying to piece together what we hope will be the best programme in Amateur Football, and although we are unpaid in this job we feel that the many hours that we give up will be well worthwhile in our endeavours to do the very best for Wealdstone F.C.

From the Treasurer's Point of View

The position of Club Treasurer is not one for a person of sensitive nature. Possibly the epithet "Scrooge" is the politest name hurled at the man in charge of the finances — no doubt over a glass of beer the descriptions become more lurid. Although I have no doubt that, at times, similar uncomplimentary comments are passed about myself, I must confess that I feel sympathetic to the frustrated, disappointed fellow-committee-man, who, having had a bright idea which he is confident is for the benefit of the Club, has to be told there are no funds available.

The tight budgets upon which all amateur clubs operate in this day and age, make it necessary, at all times, to walk a financial tightrope. It is for this reason that very often one has to weigh

the financial implications of a bright new idea — and regretfully shake a head.

Yet even treasurers are permitted to day-dream, and like my opposite numbers in many other clubs, I often dream of hitting that golden jackpot — via the F.A. Cup! I live in hope that one day Wealdstone may have the good fortune to be paired with a First Division Club in that golden money-spinner.

Far-fetched? I hope not. Some amateur clubs have achieved this happy fact. Manchester United v. Walthamstow Avenue during the 1950's comes to mind, and last season the lucrative clash with Leeds United which came the way of Sutton United.

If we could hit a similar jackpot many of our problems would be reduced. We could make a start on that long dreamed of new stand, and the urgently required new dressing rooms.

The financial success of all clubs is dependent upon the activity of their turnstiles. We, at Wealdstone, are proud of the large numbers who regularly attend our matches. Without this support our continued existence in the senior ranks of soccer would be very precarious.

It is my sincere hope that these loyal supporters will be rewarded with the "plum match" of which I often dream in the not too distant future.

If my day-dream ever becomes reality, I think that in the mad rush of impetuosity which will follow it, I might even be renamed "Spend-thrift" for a while!

"CLUB TREASURER".

With the Second String in 1969/70

A quick glance at the somewhat lowly position filled by Reserves last season might well produce a snap opinion that this was not one their best campaigns. How far from the truth that would be! Although a reserve side engages in its own competitions and hopes to be successful, that is not the "be-all and end-all" of a second string. Its main function is the development of players not quite ready for first team duty and to provide match practice for other players not currently included in the first selection. The strength of the first team last season was depleted by the sudden and often unexpected exodus of a number of players and this is where the Reserve side proved its real value from the Club point of view. On many occasions erstwhile Reserves received their senior baptism in crucial matches, and often played so well that they claimed as theirs, the position which had been vacated. All this reflects on the preparation which they had received at the hands of our old friend Edgar Francis and Reserve Team Secretary Les Boyle, capably backed up by Fred "Banger" Welch.

It can therefore fairly be said that regardless of personal success, the Reserves had possibly one of their most successful seasons last year, and it is comforting to know that although there is a widespread tendency among some Isthmian clubs to discard their second string, we are maintaining our reserve side for the coming season, and hope that another crop of candidates will emerge to jostle for first team places, so that the coach is not worried by who to put in, but rather by whom he must leave out.

Some Reflections on Past Players

by W. C. Waterlow

It may be of interest to some of the readers of this Handbook to dwell for a moment on some of the players who have played for Wealdstone in the past and to wonder what would be the best team if they were all available at the same time. My memory goes back to when we moved to Lower Mead after the First World War but no doubt some of you can take your minds back to their earlier Belmont Road days.

Forgetting for the moment the 4-3-3 and other formations which are now popular, the following occur to me:

Goalkeepers: The Club has been consistently well served in goal but perhaps the name that stands out is Danny Wiltshire who was very unlucky not to get an amateur cap for England. He particularly covered himself with glory at Port Vale on the first occasion the Stones got to the first round proper of the F.A. Cup and his numerous saves kept the score down to 1-0 in Port Vale's favour.

Backs: My earliest memories recall Arthur Loveday and Bob Ellis and later Charlie Barker (penalty and free kick specialist), Fred Haydon and Tommy McGee, who was capped as an amateur and subsequently became a professional with Portsmouth.

Half-Backs: When I first saw the 'Stones in action we had a very good centre-half in Frank Harbud who is now Deputy Chairman of the Club. He has very ably assisted the Club in various capacities ever since his playing days. Other names I recall to mind are Harold Smith (who became a professional with Notts County), Jimmy Wastell, Charlie Edmunds and Edgar Francis (now one of the Club coaches), and also, of course, more recently the very popular Charlie Townsend who has collected something like 30 England and Great Britain caps.

Forwards: At centre forward I do not think there was anybody to compare with Charlie Bunce, as most of you who saw him will no doubt agree. He played for us just prior to the last war and the game lost a great player and sportsman when he tragically lost his life whilst a prisoner of war.

The right wing pair of Phil White (who successfully made the grade with Leyton Orient) and Henry Wegrzyk were a very formidable force for some seasons during which we won the Athenian League Championship. They made a perfect combination and Henry had a lethal shot. Bert Dyke reigned supreme as an inside forward for a very long time as did Viv Evans on the left wing. I also call to mind Len Dolding and Bill Parr and, to be more up to date, the fine service rendered to the Club by Hugh Lindsay (who over a long period was established in the England team) should be mentioned.

These and other names occur to me and no doubt you can think of many others who strongly merit reference to their capabilities and performances but the team which brought the greatest glory to the Club was undoubtedly that which won the Amateur Cup at Wembley Stadium on the 16th April, 1966, namely: Brian Goymer, Gordon Sedgley, Micky Doyle, Charlie Townsend, John Ashworth, Eddie Dilsworth, Brian Allen, Jim Cooley, Bobby Childs, Hugh Lindsay and Bernie Bremer.

In conclusion perhaps I might mention Colin Franks who was with us for a short time. He enjoys the distinction of scoring a great goal against Gordon Banks (who is considered to be the world's supreme goal keeper) which resulted in the elimination of Stoke by Watford from the F.A. Cup last season.

01-427 9661-2

HIGH MEAD
Stationers Ltd

Commercial Stationers and Printers
Greeting Card Specialists

**6-7 DOMINION PARADE,
STATION ROAD, HARROW**

Middlesex County Football Association

Senior Challenge Cup Record

| Team | SEASONS | | | | | Total wins in last 5 years |
|------------|---------|------|------|------|-------|----------------------------|
| | 65/6 | 66/7 | 67/8 | 68/9 | 69/70 | |
| Enfield | W | F | 1 | W | W | 15 |
| Wealdstone | F | 1 | W | S/F | F | 12 |
| Hendon | S/F | W | S/F | S/F | 2 | 11 |
| Wembley | 1 | 1 | S/F | F | 1 | 5 |
| Finchley | 2 | 1 | 2 | 1 | S/F | 4 |
| Hampton | 1 | 2 | 2 | 2 | 2 | 4 |
| Hayes | 2 | 2 | S/F | 1 | 1 | 4 |
| Hounslow | S/F | S/F | 1 | 1 | 1 | 4 |
| Southall | 2 | S/F | 1 | 1 | 2 | 4 |
| Staines | 1 | 1 | 2 | 2 | S/F | 4 |
| Feltham | 1 | 2 | 2 | 2 | 1 | 3 |
| Harrow | 1 | 2 | 1 | 1 | 2 | 2 |
| Wingate | 2 | 1 | 1 | 1 | 1 | 1 |
| Willesden | 1 | 1 | 1 | 2 | 1 | 1 |
| Uxbridge | 2 | 1 | 1 | 1 | 1 | 1 |

KEY

W — Winners

F — Finalists

S/F — Semi-Finalists

2 — 2nd Round Proper

1 — 1st Round Proper

*Full Reports and pictures
will appear in the*

**Harrow
Weekly
Post**

on sale Tuesdays



Howard Moxon, last season's captain, in action.



Wealdstone v. Wycombe, 18.8.70. Johnny Wilson in action.



Wealdstone v . Watford: Wealdstone's second goal.



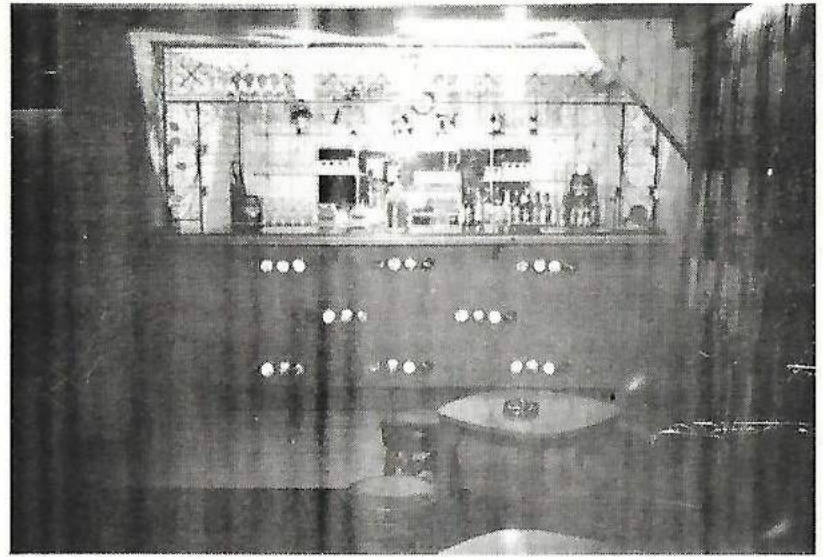
**John Ritchie and Dave Hollingdale,
Wealdstone v. Dulwich Hamlet, 22.8.70.**



**Bernie Bremer, last member of our Amateur Cup-winning side,
in action at Lower Mead.**



Social Club's Own Show: "The 1970 Starlight Show"
(Made up of Members from the Club).



Lounge Bar.



Boardroom.



Honours Board & Entrance to Club.



Dance Hall Bar & Famous Tie Collection.

Supporters' Club

Last season the Supporters' Club suffered a grievous blow when Jock Law died so suddenly. In his inimitable way Tom Law was the driving force, the inspiration and the spirit that kept the Supporters' Club moving. We never will be able to replace Jock on the committee. To perpetuate his memory we have presented the 'Jock Law Trophy' to be awarded annually to the Player of the Year chosen by the supporters. Last season you voted for Andy Williams who will hold this handsome trophy until the end of the season.

We also have to report the loss of another valued member of our committee — Eddie Cantor, who passed away after a short illness.

Despite a shortage of staff we managed last season to keep two refreshment huts open. We are extremely grateful in the main to Mrs. J. Verrall and Mrs. C. Law for their efforts in keeping these huts going. Also to Mrs. Smith, Mrs. Edwards, Mrs. Brigden and our treasurer Jack Palmer for their able support in running the tea huts. It is not always possible for the ladies to get along on first team match days and I appeal to our lady supporters to come forward and volunteer their services from time to time. If you feel that you could help out, if only occasionally, please call at the Supporters Club office and have a chat with our secretary Miss Barbara Robson or myself.

Just inside the main entrance you will find the Supporters Club Shop, where you can purchase ties, badges, rosettes, old programmes and other items that we sell to help the club funds.

The Supporters Club office is situated to the left of the Elmslie Stand and here you can join the Supporters Club for the small sum of 2/- or if you are still at school 1/- for the season. We are only permitted to take members on our coaches to away matches so please call in and see Barbara or Mrs. Robson who will issue you with a membership card and tell you all, or nearly all, about the Supporters' Club.

Those of you who read the Football Club Annual Report will have noted that the Supporters' Club donated £700 during the financial year. This was mainly contributed by members travelling on the coaches to away matches, buying our sixpenny raffle tickets on match days and drinking all those gallons of tea and Pepsi Cola. Thank you supporters.

We look now to the season ahead. This is the time when supporters come into their own. The time for helping the 'Stones' to their rightful place at the top. Take to the new lads, be tolerant

of their faults and encourage them when they do well. Let them know that you appreciate their efforts. I would ask the voice in the Stand 'Rubbish' to be a little less critical. To the voices of 'Down the Middle' and 'Get those forwards up' more power to your lungs. Let us hear the Wealdstone 'choir' leading the cheering when the lads produce the goods and hit the back of the net.

Supporters Arise: the future is yours. Let the voice of Wealdstone be heard at Lower Mead and throughout amateur football.

COME ON THE 'STONES' J. C. Brigden.

The Lower Mead Social Club

The Lower Mead Social Club was founded by the Parent Club to cater for the social side of the Wealdstone Football Club. It was run by a sub-committee of the football club for a number of years until new licensing laws came into being that stipulated a social club must be governed by itself. Thus the newly constituted Lower Mead Social Club was formed in November 1969, governed by itself and entirely self-supporting, but with the Football Club members still enjoying the amenities that it offers.

What therefore are these amenities? Firstly for a joining fee of 5/-, plus your membership fee of 25/- per annum, you enjoy—free of charge—dancing to a three piece band on every Saturday and Sunday evening. There is a Dance Hall Bar that is noted throughout the football world for its friendliness, its character, and its famous collection of "Club Ties". There is also a Lounge Bar where you can enjoy a quiet drink away from the music. A unique feature of this Bar is its Bar Counter that has illuminated champagne bottles set into its decor — souvenirs from the Amateur Cup celebrations of 1966.

The Entertainment Sub-Committee are always hard at it to give the members plenty of entertainment. For instance twice a year there is a "Spanish Barbecue Night", this evening is limited to 100 persons who for the sum of 27/6 each can enjoy as much as they like of the following:— Roast Chicken; Suckling Pig; Tossed Salad; Baked Jacket Potatoes; Ice Cream; Red & White Spanish Wine; a glass of the famous "Sangria"; a tot of hot rum punch and followed by a Dance with Cabaret until 1 a.m. the next morning.

They organise Crazy Nights; Carnival Nights and many other special extension night dances all of which are guaranteed to give you an enjoyable night out.

Another special feature that is also unique is the annual 3 hour floorshow. This is put on by the Variety Section of the Club. The company consists of some 20 members who call themselves "The Lower Mead Singers", who give up many hours of their spare

time in rehearsals in order to give first class entertainment for the members. The last show called "The 1970 Starlight Show", was both colourful and talented. So much so that officials from many football clubs—who were guests at the first night performance—have booked the show for their own clubs. These bookings together with visits to many Old Peoples Homes, Spastic Clubs, etc., have given the company quite a lengthy programme for this coming winter.

I have briefly explained the activities of the Social Club and although I say so myself as its Chairman I feel that the members do get more than their 25/- worth each year. If therefore you are not a member and would care to join why not make enquiries at The Lower Mead Social Club, just off the Station Road at the rear of the A.B.C. Cinema, Harrow. We have ample car parking facilities for you.

K. E. WILTSHIRE,

A. TROLLEY

"Hairdresser for Gentlemen"

NEWSAGENT & TOBACCONIST

20 LOWLANDS ROAD, HARROW

Phone 422 5030

We stock all the popular men's magazines, also a good selection of paperback books.

Established over 150 years

CHARLES ELWIN

29-31 PINNER ROAD,
HARROW

FUNERAL SERVICE

Private Chapels

01-427 0162 - 1167

A Requested Repeat

(In response to several requests we are repeating this absorbing history of the Middlesex Senior Cup from a previous issue).

"On the evening of Thursday, 1st December, 1887 a meeting of the Association Clubs in Middlesex was held at the Offices of the Football Association, 51 Holburn Viaduct, for the purpose of receiving an offer of a challenge cup from Mr. C. C. Colbeck of Harrow School, Mr. Betts presided, the following clubs being present: Corinthians, Old Harrovians, Finchley, Casuals, Oaks, Harrow Rovers, Olympic, Christchurch Rangers, Condors, St. Mary's Hospital, Tottenham Hotspurs, Clapton and Amer St. It was decided that a further meeting to which all Middlesex Clubs be invited, will be held, to commence at a later hour — about 7.30 or 8.00 p.m. — when it will be definitely decided as to the course to pursue, under which Mr. Colbeck's kind gift will be accepted."

11th January, 1888

"It was proposed and seconded that Mr. Colbeck's offer of a challenge cup be accepted conditionally on the resolution being confirmed at the Annual General Meeting next season."

14th September, 1888

"After the minutes of the last meeting had been read and confirmed, it was carried unanimously that the kind offer of Mr. Colbeck of Harrow School to give a challenge Cup to be competed for be accepted, and it was decided to refer the rules for the Cup Competition to the Committee and that the first round of the ties should take place on January 12th next."

Thus was born the Middlesex County Football Association Senior Challenge Cup Competition, the very first round in the Competition being drawn as follows:

| | | | | | |
|---------------|---|-----------------|-----------|---|-----------------|
| Harrow Town | v | Clapton | Hampstead | v | Grove House |
| Southall | v | Old St. Marks | West End | v | St. Mary's |
| Hanwell | v | Vulcan | | | Hospital |
| Tottenham Hot | v | Civil Engineers | Olympian | v | Caledonians |
| Marcians | v | Uxbridge | Hounslow | v | Millwall Rovers |
| Phoenix | v | Tottenham | | | |
| | | College | | | |

In connection with one of the ties in the Competition, minutes of the 29th January records "A letter was read from Mr. Bell of the Greyhound Hotel, Dulwich offering the use of the ground for half the 'gate', Middlesex to pay all expenses of advertising, etc., but should his share of the 'gate' not amount to £1 then that it should be made up to that sum."

It is interesting to note that the Chairman of the meeting at which the Competition was inaugurated, was none other than Mr. F. J. Wall, for very many years the Secretary of the Football Association.

It would, no doubt, be correct to say that apart from the Football Association Amateur Challenge Cup, the County Association Cup is normally looked upon as the next in importance to a senior amateur club and if success can be so measured the achievements of Wealdstone Football Club in the Middlesex Senior Cup points to many successes, having won the trophy on no fewer than ten occasions second only to the record of Southall F.C. who carried off the Cup twelve times; however in season 1940/41, 1941/42 and 1942/43 Wealdstone F.C. did equal the feat of Southall F.C. by winning the Cup three seasons in succession, although the latter Club can claim to having done so on two occasions.

Many famous amateur clubs, now unhappily defunct have at one time or another competed in the Middlesex Senior Cup those coming readily to mind include, London Caledonians, New Crusaders (for whom the brothers Farnfield played for so many years), Shepherds Bush, Richmond Association (the fore-runners of the present famous Middlesex Wanderers F.C.) all past winners of the trophy, and Tufnell Park. Likewise many well-known amateur players have taken part in the Competition.

Wealdstone Football Club's first excursion into the Middlesex Senior Cup came in season 1913/14. Having won the Junior Cup the previous season the Club's application to compete in the Senior Cup was accepted, to be drawn against Pinner F.C. in the First Round of the Qualifying Competition and it was not until season 1923/24 that Wealdstone F.C. was exempted to the Competition Proper being drawn away to Wood Green Town in Round One and away to Cheshunt in Round Two. Having defeated Cheshunt, Wealdstone were drawn against Bush Hill Park in the semi-final and having defeated Bush Hill Park in the semi-final lost to Southall F.C. in the final. This being the first of many appearances in the Final of the Competition.

Meeting held at Holborn Restaurant, 28th November, 1907

"The following resolution was unanimously carried: In Senior Cup Ties (unless both competing Clubs agree not to do so) gate money must be charged the minimum charge for male adults to be 3d. In the event of the club having choice of ground not having a ground where gate money can be charged such Club must provide a suitable ground free of all charge to the visiting club where gate money can be charged or play on their opponents ground, provided gate money can be charged on such opponents ground."

Meeting held at Feather Hotel, Ealing, 9th April, 1908

"The Honorary Secretary reported . . . That Southall beat Hanwell 3-0 in the Senior Cup Final on the Bush Ground before a record gate of £19 19s. 6d."

Meeting held at the Manchester Hotel, 25th June, 1909

"An application from Brentford F.C. for permission to enter the Senior Cup and Charity Cup Competitions was refused."

Meeting held 14th October, 1909

"Staines Town F.C. applied for permission to make a collection on behalf of a player who broke his ankle in a cup tie. The application was granted and it being a very sad case the Council voted the poor fellow two guineas."

"Brentford F.C. wrote offering their ground for Easter Monday for the Senior Cup Final, Southall v Lotus, for £10 to include gatemen and police. Agree to accept same subject to them advertising the match on their 500 large and small posters."

Meeting 22nd September, 1921

"On a complaint of Chiswick Town F.C. player it was decided that the medals belong to the actual players in the Final Tie."

Meeting 9th April, 1923

"The Honorary Secretary reported Southall beat Botwell Mission 2-1 before 8,788 spectators and a record gate of £490."

Geo. E. Harbor (Sec. Middx. F.A.)

VISIT

MILLETTS

FOR THE LARGEST SELECTION OF
DUFFLE COATS, MOTOR CYCLE
and INDUSTRIAL WEAR

144/146 STATION ROAD,
HARROW

427 7205

Always at your service from 9 a.m. daily

Another Game is Over

The time is 4.45 p.m. on Saturday afternoon and the final whistle has blown and you are now leaving your favourite ground. The happenings of the past 90 minutes pass through your mind and you feel either elated because your team has won, or you feel disappointed because victory has eluded them. But do you stop to think of the vast amount of work that has been carried out by a body of unpaid workers to ensure that the match is played and operated efficiently. Not only are they unpaid, but before they are able to work on our behalf, they have to become Members of the Club and pay the annual membership fee as laid down by the Club. These people are your Committee that you elected at the last Annual General Meeting.

Now in preparing for the various matches there are meetings to attend, where all the arrangements are set out, and these arrangements include notification of the match referee and linesmen, preparing for the training sessions, which include the laying on of baths, treatment of injuries, and of organising of help to provide the players with refreshments after training. On the day of the match there is the job of seeing that the turnstiles are manned, transfer gates and car parks covered and arranging for the match programmes to be on sale for you. Another big item is to see that the refreshment huts are fully operative so that you the spectator can have a hot or cold drink and something to eat when you want it.

As I have said before, all these jobs are carried out by a band of real dedicated people whose only thoughts are for the Club and the comfort of its Members and patrons, and I would point out that they rarely see any part of the first half of any of the matches. These people do not seek any thanks for what they do, and in fact it often happens that if things have not gone too well on the field of play, they are subjected to some abuse from certain sections who seem to think that they are personally responsible for any shortcomings.

So next time you attend a match, remember that a cheery smile and a word of appreciation can make so much difference to all concerned and will make the game seem all the more enjoyable because everyone will feel that they are all part of a wonderfully united Club. So here's hoping that a good season is ahead of the Club and players, and in conclusion, I would like to quote a few lines which I feel sums up the ideals of all who work and play for Wealdstone Football Club.

We may not meet with great success
Or carve for ourselves a name,
But be it that true greatness lies
In striving just the same.

T.F.V.

Playing Record — 1969/70

| Date | Opponents | I. League | Res. | Scorers |
|--------|-----------------------|----------------------------|------|--|
| Aug 9 | H v Maidstone | I. League | 3-0 | Bremer, Swain, Lindsay |
| Aug 12 | A v Wycombe Wndrs. | I. League | 2-2 | Swain, Searle |
| Aug 16 | A v Bromley | I. League | 6-1 | Swain (2), Draper, Hutchinson, Bremer, Lindsay |
| Aug 19 | H v Oxford City | I. League | 1-1 | Searle |
| Aug 23 | H v Sutton United | I. League | 0-1 | |
| Aug 27 | A v Oxford City | I. League | 1-2 | Swain |
| Aug 30 | A v Dulwich Hamlet | I. League | 1-3 | Searle |
| Sep 2 | H v Tooting & Mitcham | I. League | 3-1 | Swain (2), Hutchinson |
| Sep 6 | H v Bletchley | FA Cup Prel. | 2-1 | Searle, Montague |
| Sep 9 | H v Corinthian Cas. | I. League | 3-1 | Searle, Ritchie, Hand |
| Sep 13 | A v Leytonstone | I. League | 0-0 | |
| Sep 16 | H v Walthamstow Ave. | I. League | 2-1 | Mitchell, Searle |
| Sep 20 | H v Aylesbury United | FA Cup 1st rnd. | 0-0 | |
| Sep 25 | A v Aylesbury United | FA Cup 1st rnd. replay | 3-1 | Doyle, Mitchell, Hutchinson |
| Sep 27 | A v Hitchin Town | I. League | 0-2 | |
| Sep 30 | H v St. Albans City | I. League | 2-0 | Swain, Bullock |
| Oct 4 | H v Banbury United | FA Cup 2nd rnd. | 1-0 | Hand |
| Oct 7 | H v Hitchin Town | I. League | 2-1 | Swain, Hutchinson |
| Oct 11 | A v Ilford | I. League | 3-0 | Swain, Hutchinson, Montague |
| Oct 18 | H v Dunstable Town | FA Cup 3rd rnd. | 4-0 | Swain 2, Hutchinson 2 |
| Oct 21 | A v Tooting & Mitcham | I. League | 0-3 | |
| Oct 25 | H v Kingstonian | I. League | 2-1 | Hutchinson, Bremer |
| Nov 1 | H v Enfield | FA Cup 4th rnd. | 0-1 | |
| Nov 8 | A v Kingstonian | I. League | 0-2 | |
| Nov 15 | A v Clapton | I. League | 2-1 | Doyle, Bullock |
| Nov 22 | H v Barking | I. League | 0-4 | |
| Nov 25 | H v Flitwick Athletic | Friendly | 1-0 | Bremer |
| Dec 6 | A v Ilford | Lon. Sen. 1st rnd. | 1-2 | Bullock |
| Dec 9 | H v West Herts | Friendly | 3-1 | Swain (2), Bremer |
| Dec 13 | H v Vauxhall Motors | Am. Cup 1st rnd. | 3-2 | Bremer, Moxon, Smith P |
| Dec 20 | A v Corinthian Cas. | I. League | 1-0 | Draper |
| Dec 25 | A v Hendon | I. League | 1-2 | Swain |
| Dec 27 | H v Hendon | I. League | 0-1 | |
| Jan 3 | A v Woking | I. League | 1-0 | Bullock |
| Jan 10 | H v Bromley | Am. Cup 2nd rnd. | 3-2 | Bremer (2), Bullock |
| Jan 17 | A v Kingsbury Town | Middx. Sen. 1st rnd. | 3-1 | Bremer, Bullock, Swain |
| Jan 24 | A v Walthamstow Ave. | I. League | 1-1 | Swain |
| Jan 31 | H v Wycombe Wndrs. | Am. Cup 3rd rnd. | 0-1 | |
| Feb 7 | H v Clapton | I. League | 3-0 | Peddle (2), own goal |
| Feb 10 | A v St. Albans City | I. League | 0-1 | |
| Feb 21 | H v Hampton | Middx. Sen. 2nd rnd. | 1-0 | Bremer |
| Feb 28 | H v Woking | I. League | 4-3 | Peddle (2), Bremer, own goal |
| Mar 14 | A v Finchley | Middx. Sen. S/F. | 4-0 | Bremer 2, Swain, Peddie |
| Mar 17 | A v Barking | I. League | 0-3 | |
| Mar 21 | H v Bromley | I. League | 1-1 | Swain |
| Mar 24 | H v Enfield | I. League | 3-2 | Swain, Peddie (2) |
| Mar 27 | A v Maidstone | I. League | 2-2 | Peddle, Ritchie |
| Mar 28 | H v Amsterdam | Friendly | 0-2 | |
| Mar 31 | H v Ilford | I. League | 1-1 | Swain |
| Apr 3 | H v Whitley Bay | Friendly | 1-1 | Moxon |
| Apr 8 | H v Leytonstone | I. League | 0-1 | |
| Apr 10 | A v Sutton United | I. League | 0-0 | |
| Apr 14 | H v Wycombe Wndrs. | I. League | 0-0 | |
| Apr 18 | H v Dulwich Hamlet | I. League | 2-2 | Bullock, Swain |
| Apr 20 | A v Enfield | I. League | 0-1 | |
| Apr 25 | H v Wembley | Pres. Trophy | 1-2 | Swain |
| May 2 | H v Enfield | Middx. Sen. Final, 1st leg | 2-0 | Peddle, Ritchie |
| May 7 | A v Wembley | Pres. Trophy | 2-0 | Peddle, Ritchie |
| May 16 | A v Enfield | Middx. Sen. Final, 2nd leg | 0-3 | |

Players' Appearances & Goal Scorers Season 1969/70

| | IL | MSC | FAC | F | LSC | FAAC | PMT | Total | Goals |
|------------------------|----------------------|-----|-----|-------|-----|------|----------------------------|-------|-------|
| Micky Barnard | 22 | 2 | 4 | 5 | — | 3 | 1 | 37 | — |
| Peter Barrett | 1 | — | — | 2 | — | — | — | 3 | 2 |
| Geoff Booth | 1 | — | — | 1 | — | — | — | 2 | — |
| Bernie Bremer | 21 | 5 | 2 | 4 | 1 | 3 | 2 | 38 | 13 |
| Dave Bullock | 29 | 3 | 5 | 4 | 1 | 2 | 1 | 45 | 7 |
| Sid. Carter | 2 | — | — | — | — | — | — | 2 | — |
| John Connell | 4 | — | — | — | — | — | — | 4 | — |
| John Draper | 26 | 3 | 5 | 3 | 1 | 3 | 1 | 42 | 2 |
| Micky Doyle | 25 | 3 | 5 | 2 | 1 | 3 | — | 39 | 2 |
| Viv. Egans | 4 | 1 | 1 | — | — | 2 | — | 8 | — |
| Gary Hand | 27 | 3 | 5 | 5 | 1 | 2 | 2 | 45 | 2 |
| Alan Jackett | 2 | — | — | 1 | — | — | — | 3 | 1 |
| John Hutchinson | 14 | — | 5 | 1 | — | — | — | 20 | 8 |
| Rod Hay | 1 | — | — | — | — | — | — | 1 | — |
| Dave Leonard | 2 | — | — | — | — | — | — | 2 | — |
| Hugh Lindsay | 3 | — | — | — | — | — | — | 3 | 2 |
| Brendan Mitchell | 13 | — | 4 | — | 1 | — | — | 18 | 2 |
| Denis Montague | 29 | 5 | 4 | 5 | 1 | 2 | 2 | 48 | 2 |
| Howard Moxon | 28 | 5 | 5 | 5 | 1 | 3 | 1 | 48 | 2 |
| Lincoln Peddie | 12 | 4 | — | 3 | — | 1 | 2 | 22 | 10 |
| Fred Pulman | 1 | — | — | — | — | — | — | 1 | — |
| John Ritchie | 13 | 4 | 1 | 2 | — | — | 2 | 22 | 4 |
| Gordon Sedgley | 11 | — | 2 | — | — | — | — | 13 | — |
| Keith Searle | 10 | — | 2 | — | — | — | — | 12 | 6 |
| Mick Smith | 16 | 2 | 2 | 5 | 1 | — | 2 | 28 | — |
| Peter Smith | 2 | — | — | 2 | — | 1 | — | 5 | 1 |
| Terry Smith | 1 | — | — | — | — | — | — | 1 | — |
| Dave Swain | 35 | 5 | 6 | 6 | 1 | 2 | 2 | 57 | 19 |
| Steve Szemerényi | 3 | — | — | — | — | — | — | 3 | — |
| Alan Thomas | 1 | — | — | 1 | — | — | — | 2 | — |
| Bill Thompson | 2 | — | — | — | — | — | — | 2 | — |
| Dave Underwood | 1 | — | 1 | — | — | — | — | 2 | — |
| Andy Williams | 37 | 5 | 6 | 5 | 1 | 3 | 2 | 59 | — |
| Bob Williams | 18 | 5 | 1 | 4 | — | 3 | 2 | 33 | — |
| Graham Williams | 1 | — | — | — | — | — | — | 1 | — |
| OPPONENTS O.G. | | | | | | | | | 6 |
| Possible Appearances & | 38 | 5 | 6 | 6 | 1 | 3 | 2 | 61 | 91 |
| Goals Scored | | | | | | | | | |
| IL. | Isthmian League | | | LSC. | | | London Senior Cup | | |
| MSC. | Middlesex Senior Cup | | | FAAC. | | | F.A. Amateur Cup | | |
| FAC. | F.A. Cup | | | PMT. | | | Presidents Memorial Trophy | | |
| F. | Friendly | | | | | | | | |

The Isthmian League

- BARKING**: Founded 1880. Ground Vicarage Field, Ripple Road, Barking. Telephone 01-594 3460. Colours Royal Blue and White. Station Barking (Eastern Region and District Line). * 7,500.
- BROMLEY**: Founded 1892. Ground Hayes Lane Sports Ground, Bromley, Kent. Telephone 01-460 5291. Colours White. Station Bromley South (Southern Region). * 10,000.
- CLAPTON**: Founded 1887. Ground Spotted Dog, Forest Gate, E.7. Telephone 01-472 1655. Colours Red and White. Station Forest Gate (Eastern Region). * 8,000.
- CORINTHIAN CASUALS**: Founded 1882/87/1939. Ground (1st XI) Sandy Lane, Mitcham, Surrey. Colours White and Black. Telephone 01-648 3248. (Tooting & Mitcham Utd. F.C.) (2nd XI) Crystal Palace, National Recreation Centre, Norwood, S.E.19. Telephone 01-778 0131. * 13,500.
- DULWICH HAMLET**: Founded 1900. Ground Champion Hill, Dog Kennel Hill, S.E.22. Telephone 01-274 5187. Colours Pink and Blue. Stations East Dulwich, Denmark Hill and Herne Hill (Southern Region). * 23,000.
- ENFIELD**: Founded 1900. Ground The Stadium, Southbury Road, Enfield, Middx. Telephone 01-363 2858. Colours White and Blue. Stations Enfield Town (from Liverpool Street), Enfield Chase (from Kings Cross). * 11,000.
- HENDON**: Founded 1908. Ground Claremont Road, N.W.2. Telephone 01-458 3093. Colours Green and White. Station Golders Green Underground, then by bus No. 226. * 7,500.
- HITCHIN TOWN**: Founded 1965/1928. Ground Bedford Road, Hitchin, Herts. Telephone Hitchin (OHN2) 3237. Colours Yellow and Black. Station Hitchin (Eastern Region). * 8,500.
- ILFORD**: Founded 1881. Ground Newbury Park, Ilford, Essex, Telephone 01-554 2916. Colours Blue and White. Stations Newbury Park (Central Line) and Ilford (Eastern Region). * 8,000.
- KINGSTONIAN**: Founded 1885/1919. Ground Richmond Road, Kingston-on-Thames. Telephone 01-546 4116. Colours Red and White. Station Kingston (Southern Region). * 8,000.
- LEYTONSTONE**: Founded 1886. Ground Adjoining Leytonstone Station (Midland Region). Telephone 01-539 6117 or 7389. Colours Red. Station Leytonstone (Midland Region and Central Line). * 8,000.
- MAIDSTONE UNITED**: Founded 1897/1945. Ground London Road (A.20), Maidstone, Kent. Telephone Maidstone (OMA2) 54403. Colours Amber and Black. Stations Maidstone East, West, or Barracks. * 7,500.

* Record Attendance (to nearest 500)

- OXFORD CITY**: Founded 1882. Ground White House, Abingdon Road, Oxford. Telephone (OOX2) 48391. Colours Dark Blue and White. Station Oxford (Western and Midland Region). * 17,000.
- ST. ALBANS CITY**: Founded 1908. Ground Clarence Park, St. Albans, Herts. Telephone St. Albans (LN) 53699. Colours Royal Blue and Gold. Station St. Albans (Midland Region). * 5,500.
- SUTTON UNITED**: Founded 1898. Ground Borough Sports Ground, Gander Green Lane, Sutton. Telephone 01-644 4440. Colours Chocolate and Amber. Stations West Sutton (Southern Region), or Morden (Tube) then by bus No. 213A. * 10,000.
- TOOTING & MITCHAM UNITED**: Founded 1895/1919/32. Ground Sandy Lane, Mitcham, Surrey. Telephone 01-648 3248. Colours Black and White. Stations Tooting Junction (Southern Region) and Tooting Broadway (Underground) then by bus to "Swan" Mitcham. * 7,500.
- WALTHAMSTOW AVENUE**: Founded 1899/ 1908. Ground Green Pond Road, Higham Hill Road, E.17. Telephone 01-527 1130 and 2795. Colours Light and Dark Blue. Station Hoe Street (Eastern Region) and Blackhorse Road (Midland Region). * 12,000.
- WEALDSTONE**: Founded 1900. Ground Lower Mead, Station Road, Wealdstone, Harrow. Telephone 01-427 2840. Colours Royal Blue and White. Stations Harrow-on-the-Hill (Metropolitan Line) and Harrow and Wealdstone (Bakerloo and Euston Main Line). Buses 158, 114, 18, 183, 140. * 13,500.
- WOKING**: Founded 1887. Ground Sports Ground, Kingfield, Woking. Telephone Woking 60855. Colours Cardinal and White. Station Woking (Southern Region). * 8,500.
- WYCOMBE WANDERERS**: Founded 1884/90. Ground Loakes Park, High Wycombe. Telephone High Wycombe (OHW4) 26547. Colours Dark and Light Blue. Station High Wycombe (Western Region). * 17,000.

* Record Attendance (to nearest 500)

ACKNOWLEDGEMENTS

The committee of Wealdstone Football Club express their thanks for assistance given by members and supporters, to George E. Harbor, Secretary, Middlesex F.A., Harrow Reference Library and to the advertisers, without whose support this handbook would not have been possible.

Our Record in the Athenian League

| Year | Champions | Runners-up | Wealdstone Finished |
|--------------|-------------------------------|-------------------------|------------------------|
| 1928-29 | Leyton - - - | Hampstead - - - | 8th |
| 1929-30 | Walthamstow Avenue | Barnet - - - | 5th |
| 1930-31 | Barnet - - - | Walthamstow Avenue | 5th |
| 1931-32 | Barnet - - - | Hayes - - - | 6th |
| 1932-33 | Walthamstow Avenue | Hampstead - - - | 10th |
| 1933-34 | Walthamstow Avenue | Romford - - - | 13th |
| 1934-35 | Barking - - - | Enfield - - - | 14th |
| 1935-36 | Romford - - - | Bromley - - - | 13th |
| 1936-37 | Romford - - - | Walthamstow Avenue | 3rd |
| 1937-38 | Walthamstow Avenue | Barnet - - - | 4th |
| 1938-39 | Walthamstow Avenue | Romford - - - | 3rd |
| 1939 to 1945 | Suspended during World War II | | |
| 1945-46 | Sutton United - - - | Leyton - - - | 6th |
| 1946-47 | Barnet - - - | Sutton United - - - | 4th |
| 1947-48 | Barnet - - - | Hendon - - - | 5th |
| 1948-49 | Bromley - - - | Hendon - - - | 4th |
| 1949-50 | Tooting and Mitcham | Hayes - - - | 5th |
| 1950-51 | Bromley - - - | Walton & Hershams - - - | 9th |
| 1951-52 | Wealdstone - - - | Hendon - - - | 1st |
| 1952-53 | Hendon - - - | Wealdstone - - - | 2nd |
| 1953-54 | Finchley - - - | Hitchin Town - - - | 12th |
| 1954-55 | Tooting and Mitcham | Southall - - - | 14th |
| 1955-56 | Hendon - - - | Hounslow Town - - - | 10th |
| 1956-57 | Hayes - - - | Finchley - - - | 13th |
| 1957-58 | Sutton United - - - | Maidstone - - - | 8th |
| 1958-59 | Barnet - - - | Wealdstone - - - | 2nd |
| 1959-60 | Hounslow Town - - - | Barnet - - - | 4th |
| 1960-61 | Hendon - - - | Wealdstone - - - | 2nd |
| 1961-62 | Enfield - - - | Barnet - - - | 3rd |
| 1962-63 | Enfield - - - | Barnet - - - | 3rd |
| 1963-64 | Barnet - - - | Finchley - - - | 5th |

In 1964 Wimbledon created a vacancy in the Isthmian League when they turned professional. Wealdstone were elected for the position and their record in the Isthmian League follows.

Our Record in the Isthmian League

| Year | Champions | Runners-up | Wealdstone Finished |
|---------|---------------------|---------------------|------------------------|
| 1964-65 | Hendon - - - | Enfield - - - | 8th |
| 1965-66 | Leytonstone - - - | Hendon - - - | 6th |
| 1966-67 | Sutton United - - - | Walthamstow Avenue | 12th |
| 1967-68 | Enfield - - - | Sutton United - - - | 7th |
| 1968-69 | Enfield - - - | Hitchin Town - - - | 5th |
| 1969-70 | Enfield - - - | Wycombe Wanderers | 10th |

Come Every

THURSDAY

to

**HARROW
OPEN MARKET**

from

9 a.m. - 5 p.m.

in the

WEALDSTONE F.C. CAR PARK

**THE MARKET TRADERS LOOK FORWARD
TO SERVING YOU AND SAVING YOU MONEY.**