



James Vance Travel Ltd.

Associate Company:
C.S.R. TRAVEL
96 New Bond Street
London, W.1
Tel: MAYfair 2247

Your Local Travel Agents

I.A.T.A.
BRITISH RAIL

771, Fulham Road, London, S.W.6

Winter Sunshine Holidays

MAJORCA, CANARY ISLANDS, SPAIN, etc. 8 and 15 days from £26.

Also Independent Holidays to
CYPRUS, GREECE, CARIBBEAN, LEBANON AND ISRAEL

For all details please ring: Mr. WILSON at RENown 6471/2/3

INTERNATIONAL FOOTBALL LEAGUE MATCH

FOOTBALL LEAGUE v SCOTTISH LEAGUE

at Ayresome Park, Middlesbrough

on Wednesday, 20th March, 1968, Kick Off 7.30

Tickets in advance for this match will be available from "The Secretary, Middlesbrough Football Club, Ayresome Park, Middlesbrough, Yorks." as follows:—

Reserved seats—Centre Stands 12s. 6d. Wing Stands 10s.
Terrace Seats 8s. 6d. East End Seats 7s. 6d.

Applications for tickets should be accompanied by remittance and stamped addressed envelope for return of tickets.

Admission to South Paddock 5s.; Ground 4s. 6d. (Boys 2s.) will be by cash at the turnstiles.

Read the

SUNDAY EXPRESS

for the Best reports of all
Fulham F.C. matches

EMERALD BINGO & SOCIAL CLUB

263 Hammersmith Road, W.6.

BINGO NIGHTLY

Mon.—Fri. 8 p.m. Sat. & Sun. 7.30 p.m.

RIVERSIDE CAR HIRE

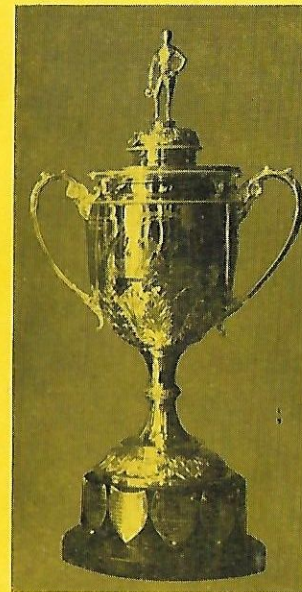
RIV 4395

HUMBERS AT MINI RATES

SPECIAL RATES FOR
AWAY MATCHES

Door to Ground and Return

Advertising Rights acquired by Allsports Publicity Co. Ltd., 17 Nottingham Street, London, W.1
Printed and Published for Fulham Football Club Ltd. by T. W. Pegg & Sons Ltd., Effie Road, S.W.6



F.A.
AMATEUR
CUP



SOUVENIR
PROGRAMME

1/-

SEMI-FINAL TIE

CHESHAM UNITED v WEALDSTONE

AT CRAVEN COTTAGE S.W.6.

SATURDAY 16th MARCH 1968 Kick off 3.0. p.m.



ANTHONY HUTLEY

& PTNRS LTD.

SURVEYORS & ESTATE AGENTS

1, Park West Place, Marble Arch,
London, W.2.

SPECIALISTS

in the

SALE and LETTING

of

Flats, Houses

and Maisonettes

throughout

London and the Provinces

AMBassador 5511 01-262 5511



**FULHAM
FOOTBALL
CLUB
LIMITED**

Registered Office:

Craven Cottage,
Stevenage Road,
S.W.6

Directors:

T. TRINDER (Chairman)
N. A. D'AMATO
(Vice-Chairman)
R. A. DEAN
J. G. WALSH
C. B. DEAN
E. M. MILLER, J.P.

Secretary:

G. I. S. HORTOP

Manager:

R. W. ROBSON

Medical Officer:

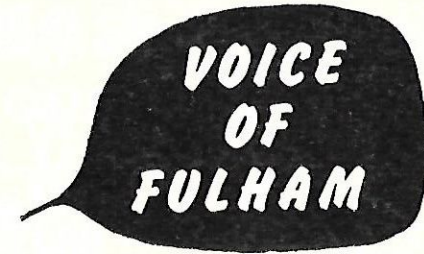
Dr. W. R. D. WIGGINS,
M.R.C.S., D.A., R.C.P.
and S. (England)

Telephone:

736 5621/7035

Telegrams:

"FULHAMISH,
LONDON,
S.W.6."



TODAY Fulham's First Division battle moves away from Craven Cottage—and we make room for a game that is sure to grace our ground. We sincerely welcome the players, officials and supporters of Wealdstone and Chesham and hope their F.A. Amateur Cup semi-final is a success.

Wealdstone's greater experience and status is matched with the enthusiasm and momentum of Chesham who are not accustomed to stepping so far along the path to glory.

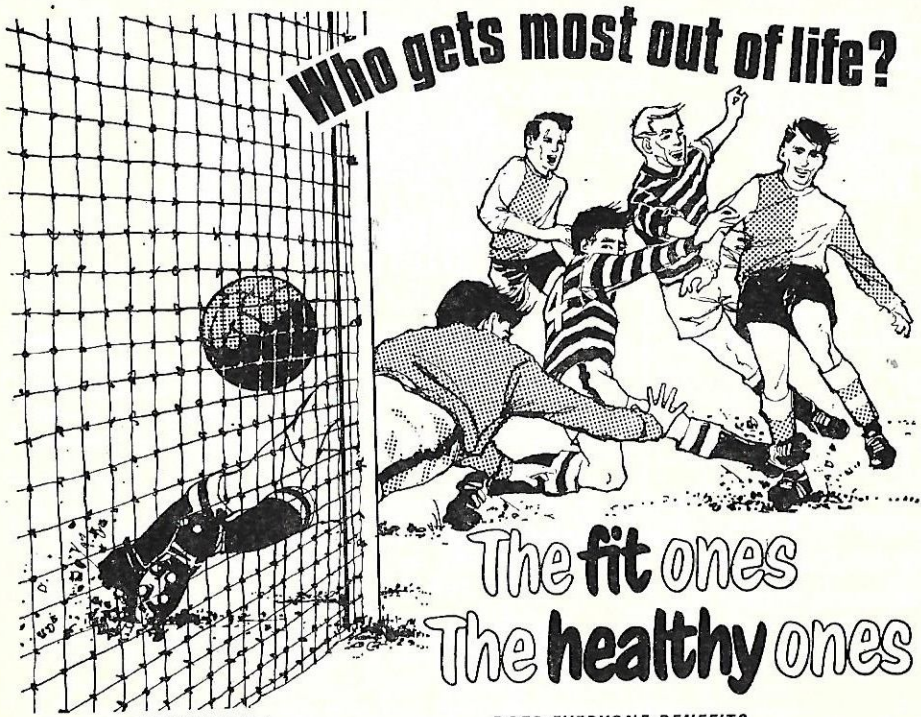
Wealdstone steaming a steady fourth in the Isthmian League—Chesham a humble fourth from bottom in the Athenian League. It is a real Cup David v. Goliath tussle and with the glamour of Wembley casting its extra magic on the occasion.

Even in the professional game the Amateur Cup enjoys a huge following and two sides from around London will certainly mean a good-sized crowd today. The Chesham fans have roared their team through 14 ties and undoubtedly deserve their excitement today. Chesham's performance in the quarter-final last week beating Oxford City proves that an upset cannot be ruled out today.

Amateur football is the life-blood of the game and the standard of play in the senior grade is much higher than many followers of the professional game realise.

So the Fulham fans we expect to be attracted here today can expect a treat. It is not often we can be neutral over a game at Craven Cottage—so we wish both teams the best of luck and hope that everyone has an thrilling afternoon.





Who gets most out of life?

**The fit ones
The healthy ones**

SEND FOR BULLWORKER!
Doctors recommend it—not only for athletes but for every man who wants a better-conditioned better-developed body. It helped the American and German Olympic teams to win 40 Gold Medals at Tokyo. And it can help you, too, to enjoy new fitness, new vigour, and the new good looks which good health brings.

BETTER THAN SPORTS!
Sports are fine—but they develop only a limited range of muscles. Bullworker has been scientifically designed to give you *all-round* development. The simple daily programme gives you—in a few minutes each day—more exercise, better exercise, than hours on the sportsfield.

FEEL BETTER, LOOK BETTER!
Bullworker uses the scientific system of Isometric Contraction to build up more than 300 muscles in your chest, back, shoulders, stomach, arms, legs. And muscular development is only half the story. You benefit at the same time from improved functioning of body organs and blood circulation, plus a fabulous sense of well-being which shows in the way you walk, the way you move, the way you look.

HOW SOON WILL YOU SEE RESULTS?
From the first day! You can expect an average weekly strength increase of 4%—that's a 50% improvement three months from now!


DOES EVERYONE BENEFIT?
Yes, everyone—no matter what type of body you have, how old you are, what kind of job you do, or what other exercise you enjoy.

DOES IT TAKE UP MUCH TIME?
The basic Bullworker workout consists of a series of simple invigorating exercises, one for each muscle group, each lasting only 7 seconds. How many exercises you do is up to you, but your total workout need occupy only 5 minutes a day, done anywhere and at any time.

FREE TRIAL!

We're convinced Bullworker will do for you what it has done for so many others: so we invite you to use it in your own home at our expense for a couple of weeks. Start by sending for our FREE 24-page coloured brochure which tells you—without any obligation—how you can start on the Bullworker road to a great new life!

BULLWORKER
18 St. Ann's Crescent, London, S.W.18



FREE Please send me my FREE full colour 24 page brochure about BULLWORKER 2 without obligation.

No salesman will call.

Only available in U.K. and N. Ireland

NAME (in full).....

ADDRESS (in full).....

BULLWORKER Dept FCPF, 18 St. Ann's Crescent, London, S.W.18

CHESHAM'S AMAZING CUP-RUN

Chesham's fourth round home replay last Saturday was the club's 15th game in this season's Amateur Cup competition. Results and scorers to date are:

September 23: Away to Hemel Hempstead, preliminary round, won 2—0. Scorers: Fruen and Black.

October 7: Home to Didcot, 1st qualifying round, won 3—0. Scorers: Ellis (2), Fruen.

October 21: Away to Hazells, 2nd qualifying round, won 2—0. Scorers: Ellis, Goode.

November 4: Home to Marlow, 3rd qualifying round, won 3—1. Scorers: Fruen, McCaffrey (2).

December 16: Away to Soham, 4th qualifying round, drawn 1—1. Scorer: Fruen.

December 23: Home to Soham, 4th qualifying round replay, won 1—0. Scorer: Burgess.

January 20: Home to Maidenhead, 1st round proper, drawn 2—2. Scorers: Fruen, Joe Harper.

January 27: Away to Maidenhead, 1st round replay, drawn 2—2. Scorers: Ellis, Harper.

January 31: Versus Maidenhead at High Wycombe, 2nd replay, 1st round, won 2—1. Scorers: Harper, Black.

February 3: Away to Dulwich Hamlet, 2nd round proper, drawn 1—1. Scorer: Fruen.

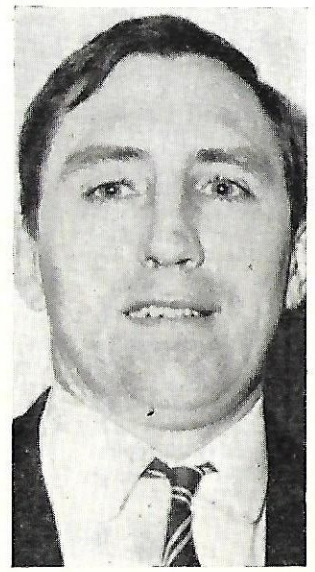
February 10: Home to Dulwich Hamlet, 2nd round replay, won 4—2. Scorers: Fruen, Harper (2), Frost.

February 17: Away to Corinthian Casuals, 3rd round, drawn 0—0.

February 24: Home to Corinthian Casuals, 3rd round replay, won 1—0. Scorer: Fruen.

March 2: Away to Oxford City, 4th round, drawn 0—0.

March 9: Home to Oxford City, 4th round replay, won 2—0. Scorers: Ellis, Frost.




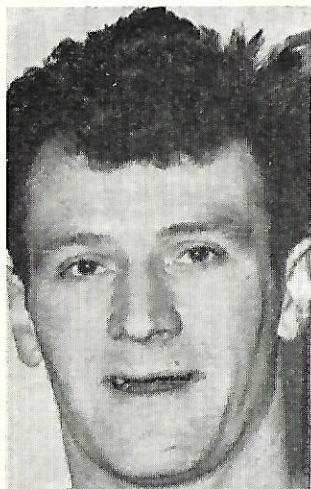
Manager **John Reardon**, 35, was born in South Wales and now lives in Slough. He is married with one daughter. He excelled in schools football, winning many county and youth honours. Later he played for Arsenal in Mid-week league games. Although he entered senior football with Slough, it was with Maidenhead that he really made his mark. He played for Wycombe Wanderers before making his debut with Chesham in 1961 and has remained with the club since then as a player and now manager.

Photo by Buckinghamshire Advertiser.

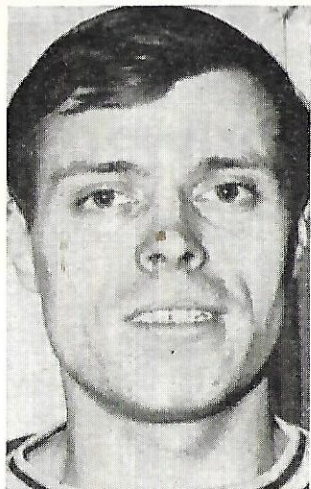
Porter & Porter Ltd.
Builders — Decorators
Maintenance Repairs
**343, FULHAM PALACE ROAD,
S.W.6.**
Telephone: **RE**Own 4821

FULHAM WHEELERS CYCLING CLUB
Members compete in Road, T.T.'s and Track Races.
All age groups, racers, tourists or organisers welcomed.
Details: **B. RIDGE**, 140 Wandle R., Morden, Sy.

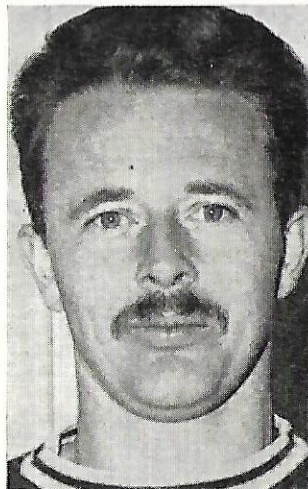




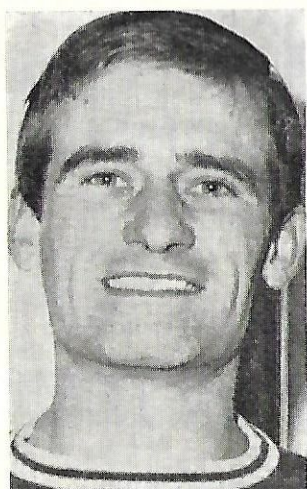
Dennis Wells, 28, lives at Tring and kept goal for Tring's Spartan League side for 10 years. Came to Chesham at the start of the present campaign and took over in the senior team goal after Alan Binfield was injured against Maidenhead. His safe handling and brilliance in dealing with centres has contributed much to the team's cup run.



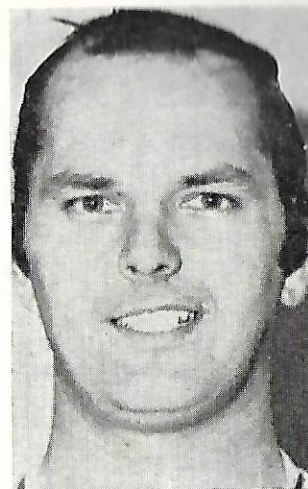
Brian Thackeray, right-back. Yorkshire born, 27, now lives in Slough and appeared in the colours of Newbury, Oxford United and Windsor and Eton before joining Chesham at the start of this season. He has been honoured by the Athenian League, Berks and Bucks and is at present first choice for county team at full-back. Plays both cricket and tennis.



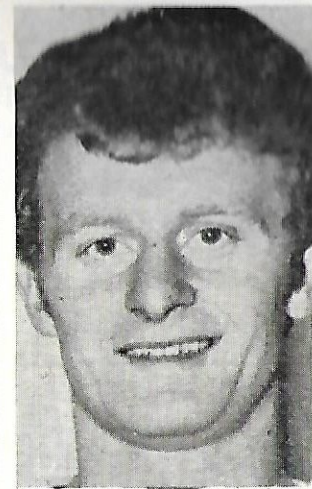
Dereck Smith, left-back, was born in Hemel Hempstead 25 years ago and still lives in the town. He started his playing career with Tring Town where he stayed two years before moving to Hemel Hempstead for six years. He also joined Chesham at the start of the present season and has become a valuable member of a tight defence.



David Ellis, outside-right, 24, lives at King's Langley. Excelled in junior and youth football, honoured by Hertfordshire as a youth player. He has also played for F.A. youth teams. He graduated through Watford juniors to the Watford reserve side before joining Barnet and then Southall. Joined Chesham at the start of this season.



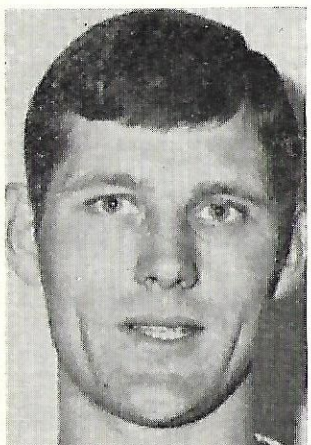
David Black, inside-right, was born at Fleet, 25 years ago and still lives in Hampshire. Joined Fleet and was selected for the South of England. His consistent play earned him trials with Spurs and he played in the London club's reserve team. He was honoured by Berks and Bucks last season when playing for Wokingham. He has a knack of scoring goals.



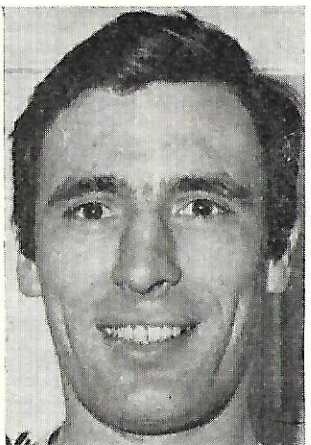
Ronnie Fruen, London born, 21-years-old, lives at Englefield Green, Old Windsor. He started his football career with his village team, moved on to Walton and Hersham. He had a spell with Southall during which time he played for Middlesex and celebrated his arrival at The Meadow by scoring in his first match. He is tireless worker.

CHESHAM'S

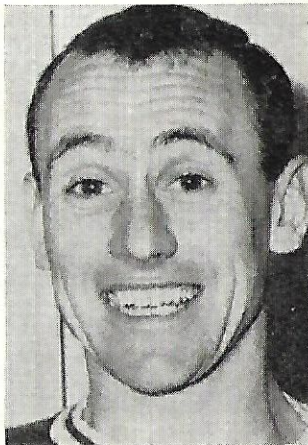
GIANTKILLERS



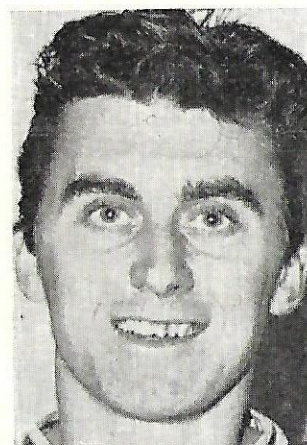
Brian Caterer, right-half, 24, who plays a dual role with centre-half Les Burgess, started his career in Hayes 'A' side and worked his way through the reserves to the senior team. After a spell with Uxbridge he came to The Meadow, but then joined Southall where for two seasons he was skipper. He returned to Chesham at the start of this season.



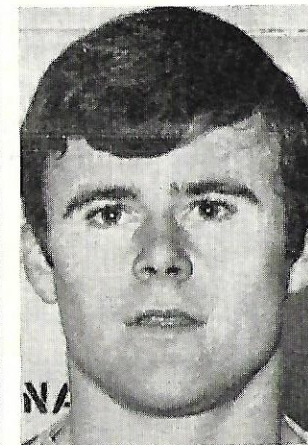
Les Burgess, centre-half and skipper. At 27 is probably one of the most experienced centre-halves in Athenian soccer. Gained experience with Watford juniors and representative honours with Hertfordshire juniors. Before taking over as skipper of Chesham he played for Q.P.R. and Finchley and was captain of Wembley last season.



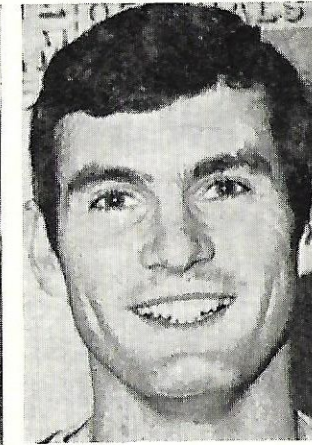
Mick McCaffrey, wing-half, is 25 years of age and lives at Greenford. A highly mobile wing-half, he is in his third season with United. He joined Wembley Town straight from school and remained with them for seven years. A spell with Harrow Borough followed before this forceful player came to The Meadow. Mick has had trials with Chelsea.



Kenny Kent, 22, was born at Chalfont St. Peter, joined the local Spartan League club and was their leading goalscorer. He joined Maidenhead two seasons ago and became regular choice for Berks and Bucks. Although he has so far been mainly seen as a mid-field player is probably at his best as a striker for he hits the ball with tremendous power.



Joe Harper, outside-left, is 21, lives at Watford. He moved on to Wealdstone and made a number of first team appearances at Lower Mead before coming to Chesham at the start of the present season. He failed to command a regular first team berth until the cup games with Maidenhead, but since then has scored five times.



Peter Frost, 22, appears happy in almost any forward position. Started his football with the Pathfinders' Club which has produced so much local soccer talent including manager John Reardon's brother Terry, now with Slough. Peter joined Chesham from Slough during the close season. He was leading scorer with Slough reserves last season.

UNITED LUBRICANTS LTD.

UNITED HOUSE, LONDON, W.11.

Suppliers to the Garage Trade of :

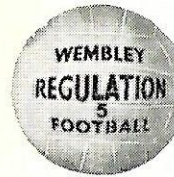
- CARBUROL AROMATIC** — Increases your car performance.
- FORLIFE** — Your car's permanent anti-freeze.
- CARBUROL SUPER** — Reduces friction in your car.

Also Suppliers to Industry. Factory & Depots—Fulham & Wetherby.



"PRACTICE MAKES PERFECT"

WEMBLEY VINYL FOOTBALLS



Take Johnny Haynes' advice — use Wembley Footballs for practice games — they're re-inflatable, repairable and stand up to any kind of treatment — that's why youngsters like them.

Wembley Official size in poly bag 6/11d. Wembley Regulation (Correct Football Weight) 10/11d. In tan or white.



SEE THE VAST RANGE OF METTOY PLAYBALLS AT YOUR SPORTS SHOP NOW

SHOP AT "MAUREEN'S" FOR TOP QUALITY

25% OFF MOST LINES

YOUNG & CO'S SPECIAL PRIZE BEER

AT

THE CASTLE

(with First Class Restaurant)

PUTNEY BRIDGE ROAD

AND

THE DUKES HEAD

PARSONS GREEN

CHESHAM UNITED

Claret & Blue Shirts, Blue Shorts.

- 1 Dennis Wells
 - 2 Brian Thackeray
 - 3 Dereck Smith
 - 4 Brian Caterer
 - 5 Les Burgess
 - 6 Mick McCaffrey
 - 7 Dave Ellis
 - 8 David Black
 - 9 Ron Fruen
 - 10 Ken Kent
 - 11 Joe Harper
- Sub : Peter Frost

Referee :
Mr. E. J. KNIGHT (Somerset)

WEALDSTONE

Royal Blue Shirts, White Shorts.

- Andy Williams 1
 - Bobby Warman 2
 - Dave Leonard 3
 - Charlie Townsend 4
 - Tony McGuinness 5
 - Tony Slade 6
 - Bernie Bremer 7
 - Kieron Somers 8
 - Dave Swain 9
 - Denis Montague 10
 - Hugh Lindsay 11
- Sub : John McCormack

Linesmen :
Mr. R. N. MORPHEW (Red Flag)
Mr. D. S. BONE (Yellow Flag)

**GENTS DRESS &
MORNING HIRE**
Telephone 748 8030
G. TURGEL & SON
338a KING STREET W6

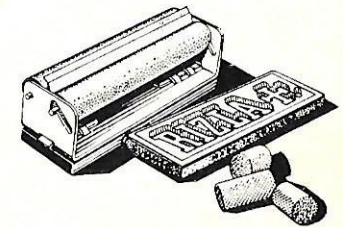
WOMENS, MENS & CHILDRENS WEAR, ETC.
98 LOWER RICHMOND ROAD, PUTNEY

SALE DAY EVERY DAY

RIZLA

is for men who like
to suit themselves

- * PLAIN OR FILTERED
- * FINGER ROLLER OR MACHINE ROLLER
- * OWN CHOICE OF TOBACCO



Complete Outfit only 9½d.

ROLL YOUR OWN WITH RIZLA IT'S SO EASY

MOTOR INSURANCE

NO CLAIM DISCOUNT
UP TO 60%

Competitive Rates for Life, Endowment,
Household and all General Insurances

RONALD BERNARD & CO.
INSURANCE BROKERS

147, FULHAM PALACE ROAD,
LONDON, W.6

Tel. : 01-385 9512

The Hoiman Tool & Eng'g Co. Ltd.

92-104, Carnwath Road, Fulham, S.W.6
Tel.: RENown 2217

We have vacancies for the following Toolroom personnel
TOOLMAKERS, MOULDMAKERS, TURNERS,
MILLERS, JIG BORERS & JIG GRINDERS,
SURFACE & UNIV. GRINDERS

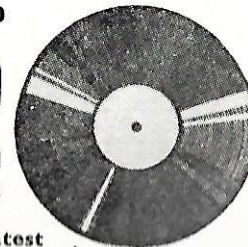
Modern Factory, Good Canteen, Top Rates

SPIN ROUND

SOUND

309 FULHAM
LONDON SW6

Fulham's Latest



TO THE

SCENE

PALACE RD.
tel 736 2564

Record Bar

For Records and Greetings Cards

A. W. CHAPMAN LIMITED

Sullivan Road, Fulham, S.W.6

have VACANCIES at their
FULHAM and

WANDSWORTH PLANTS for
PRESS OPERATORS WELDERS

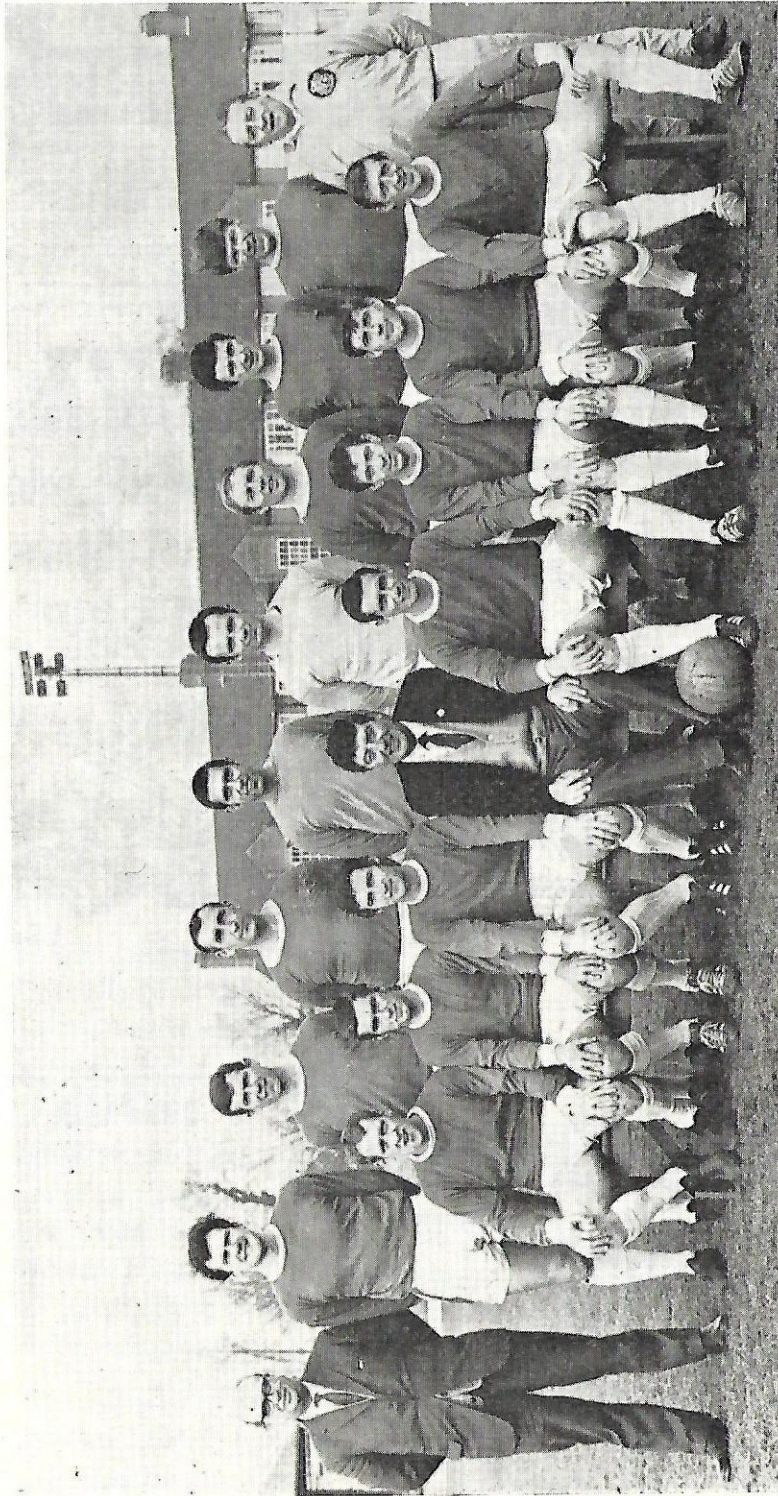
ASSEMBLERS FITTERS

STOREKEEPERS PACKERS

and CLERICAL WORKERS

Tel. : Mr. BATSON, 01-736 7064

WEALDSTONE FOOTBALL CLUB



Standing: J. Sparks (physio), A. McGuinness, D. Leonard, A. Quick, M. Blythe, A. Williams, D. Pettit, B. Bremer, D. Montague, R. Croucher (trainer).
Sitting: D. Swain, J. Hutchinson, K. Somers, V. Burgess (coach), R. Warman, A. Slade, J. McCormack, H. Lindsay.

WEALDSTONE HEROES

ANDY WILLIAMS, Goalkeeper. Age 21. Previous clubs Crystal Palace, Leeds, and Loughborough. Ht. 6ft. Wt. 12-2. One of the best uncapped goalkeepers in Amateur football. Came into the side when Blythe was injured early in the season, and has been a regular ever since. Represented Leicestershire County F.A., English Universities and F.A. Amateur XI. Schoolteacher.

BOBBY WARMAN, Back. Age 27. Previous clubs Arsenal and Barnet. Ht. 5-9. Wt. 11. Hard and tenacious tackler, represented F.A. Amateur XI, Middsx. Wanderers, Herts, Middsx, Athenian League, and England Trialist. Works as an Engineer.

DAVID LEONARD, Back. Age 28. Previous club Maidstone. Ht. 5-11. Wt. 11-7. Clever positional player, and distributor. Represented Kent, London F.A., Middsx. Wanderers. Works as a Printer.

CHARLIE TOWNSEND (Capt.). Age 29. Has only played for Wealdstone. Ht. 5-8. Wt. 11-4. Has 31 caps for England. Played for the British Olympic XI. A very clever ball player, plays equally well in the forward line, and has scored many goals in both positions. Represented Middsx. Wanderers, Middsx., London F.A., Isthmian League, Athenian League. Works as a Carpenter.

TONY McGUINNESS, Half-back. Age 26. Previous clubs Wimbledon, Sutton, and Maidstone. Ht. 6-1. Wt. 13. King pin of the defence, strong tackler, and stopper, very good with his heading. Represented F.A. Amateur XI, and Isthmian League. Works as a Representative.

TONY SLADE, Half-back. Age 28. Previous clubs Tooting, Kingstonians. Ht. 5-9. Wt. 10. Very experienced and capable link man, loves to score goals. Represented London F.A., Surrey, Middsx., F.A. Amateur XI, and Isthmian League. Works as an assistant Print Buyer.

DENNIS MONTAGUE, Half-back. Age 26. Previous clubs Petters Sports, and Kingstonian. Also plays at inside forward, always gives 90 minutes of endeavour, hard to beat in the tackle. Ht. 5-11. Wt. 11-7. Represented London F.A., Surrey, Isthmian League, and Spartan League. Works as a Bricklayer.

BERNIE BREMER, Forward. Age 21. Been with Wealdstone five seasons. Ht. 5-10. Wt. 10-10. Speedy and tricky winger, former pupil at Hugh Lindsay's school, possesses powerful shot, and consistent goal scorer. Represented F.A.

Amateur XI, London F.A., Middsx. Works as a Market Research Officer.

KIERON SOMERS, Forward. Age 22. Previous clubs Finchley, Hounslow, and St. Albans. Ht. 6-3. Wt. 13. Recently came into the side, very dangerous with his head, and distributes the ball well. No representative honours as yet, but if good form is maintained must eventually come into the reckoning for a cap with Eire. Works as a Clerk.

DAVID SWAIN, Forward. Age 25. Previous club Hendon. Leading goalscorer this season, fast and tricky, and knows the way to goal. Comedian of the side. Ht. 5-10. Wt. 12-7. Played for Hendon against Wealdstone in 1965-66 cup final. Represented Amateur F.A. XI, and Middsx.

HUGH LINDSAY, Forward. Age 29. Previous clubs London University, and Kingstonian. Capped 30 times for England, and in the Olympic XI, 1960-64, and 1967-68. Ht. 5-8. Wt. 10-5. Equally at home on either wing, noted for his powerful shooting, and positional play, very often the match winner. Represented London F.A., Surrey, Middsx., Middsx. Wanderers, and Isthmian League. Schoolteacher.

JOHN McCORMACK, Forward. Age 26. Previous clubs Woking, and Kingstonian. Ht. 5-10. Wt. 11-4. Prolific goalscorer for previous club Kingstonian, but dogged by injuries since joining Wealdstone. Represented F.A. Amateur XI, Surrey, Middsx., and Isthmian League. Works as a Carpenter.

MICK BLYTHE, Goalkeeper. Age 24. Previous clubs Bletchley, and Luton Town. Ht. 6-1. Wt. 12. Started season as first team goalkeeper, and playing very well too, but injured in October, and owing to the brilliance of Williams, has been unable to regain his place. Works as an Accountant.

JOHN HUTCHINSON, Forward. Age 19. Product of Wealdstone's A side. Ht. 5-8. Wt. 10-4. Made his Isthmian League debut for Wealdstone against Oxford in September 1967, and will undoubtedly make his presence felt in the coming seasons. Hard and fast winger. Works as an Electrician.

DOUG PETTIT, Back. Age 25. Previous clubs Leytonstone, and Wembley. Ht. 5-8. Wt. 11. Very capable deputy in previous rounds of the cup, hard kicker of the ball, and sound tackler. Works as a Salesman.

THE HISTORY OF WEALDSTONE

Wealdstone are entering their second semi-final of the Amateur Cup, the last time being two seasons ago, when at Stamford Bridge, they defeated strong opponents Alvechurch by an only goal scored by Brian Allen, and then proceeded to win that coveted trophy at the first time of asking, by putting up a great display of team work, beating local Isthmian League rivals Hendon by three goals to one. Of that successful side, only three players remain, skipper Charlie Townsend, Hughie Lindsay and Bernie Bremer. The coach Vince Burgess had a very trying time last season in trying to weld together another side capable of reaching Wembley, but was thwarted by a single goal defeat by Skelmersdale, who eventually reached Wembley themselves, and only lost after a replay with powerful Enfield. Having decided the strength and weakness of Wealdstone, Burgess made some astute signings this year, and has produced a very good team, so much so, that during one period of the present season, the team went 25 matches without defeat, easily a club record. A spate of injuries befel them during the Christmas period, and a number of matches were lost but have made a very good recovery; the side are on the winning trail once again.

Formed in 1900, Wealdstone bought their present ground in 1922, and were playing then in the Spartan League, but in 1928 were elected to the Athenian League, where they played until joining the Isthmian League in 1964, winning the Athenian League championship in 1952 on their way, but that elusive Amateur Cup was not forthcoming, the furthest they had got was the fourth round, and although the ground is only three miles from Wembley Stadium, it was always as spectators that the officials and staff had to endure, true they had won the Middlesex Senior Cup nine times and had also shared the London Senior Cup with Wimbledon, but the glory and excitement of Wembley was the main goal, and so in 1961 they appointed Vince Burgess as coach, from Harrow Town, he having passed the F.A. coaching course in 1957. Burgess, Coventry born, and for a while played with Torquay United, but suffered a knee injury, which compelled him to give up the playing side of football and concentrate on coaching, and also to earn his living as a school teacher, immediately set about the task of getting a strong team together, and was rewarded with that cup win in 1965-66.

He is ably supported on the staff, with his understudy Edgar Francis, who coaches the reserves, physio Jim Sparks, who tends the pulled muscles, etc., and by trainers Bob Croucher (with Watford a great number of years) and former player Fred Welch. The Committee at Wealdstone give Burgess a free hand, he alone is responsible for choosing the team, and with such a fine following of supporters that they possess probably the best supported in the south, everybody connected with the club is hoping for success again this year.

Wealdstone are members of the Football Association; Isthmian League; affiliated to Middlesex F.A. and London F.A. Their president is Mr. Henry Luck, chairman Jack Rogers, deputy chairman Frank Harbud, and secretary is Mr. Ken Wiltshire.

How Wealdstone have reached the semi-final: Torpoint 2, Wealdstone 4 (Swain 2, Bremer, McCormack); Wealdstone 2, Kingstonian 0 (Bremer, McCormack); Eastwood 1, Wealdstone 1 (Swain); Wealdstone 4, Eastwood 1 (Swain, Lindsay, Somers, Townsend); Wealdstone 3, Barking 1 (Swain Lindsay, Somers).

ISTHMIAN LEAGUE SENIOR SECTION (Up to and including March 9th, 1968)											
	P.	W.	D.	L.	F.	A.	P.s.				
Enfield	26	19	6	1	70	18	44				
Hendon	28	16	6	6	64	25	38				
Walthamstow Av. 28	15	8	5	67	50	38					
Wealdstone	26	14	7	5	60	30	35				
Sutton United ...	25	13	8	4	58	20	34				
Leytonstone ...	22	14	5	3	56	25	33				
St. Albans City ..	26	13	6	7	55	29	32				
Tooting & M. U.	28	14	4	10	43	34	32				
Bromley	30	12	8	10	54	59	32				
Oxford City	26	15	1	10	48	34	31				
Hitchin Town ...	28	10	6	12	50	60	26				
Barking	24	10	5	9	51	45	25				
Wycombe Wand.	29	10	5	14	60	58	25				
Kingstonian	27	9	7	11	34	45	25				
Clapton	28	8	4	16	37	65	20				
Woking	31	7	6	18	43	78	20				
Corinth'n-Casuals	26	5	6	15	26	53	16				
Dulwich Hamlet	27	5	5	17	23	54	15				
Ilford	28	4	5	19	32	61	13				
Maidstone Utd. .	29	3	2	24	23	111	8				

PROUD CUP RECORD

Chesham has always been a football minded town and the club has had much success in cup competitions since the early days. There used to be two clubs in Chesham, Chesham Generals, formed in 1887, and Chesham Town, founded in 1889, and a founder member club of the Athenian League.

Chesham United was formed by the amalgamation of the two clubs in 1919.

The Berks and Bucks Senior Cup has been won by Chesham teams no fewer than 11 times, in.

1901-2, Chesham Generals; 1903-4, Chesham Town; 1907-8, Chesham Town; 1921-22, Chesham United; 1925-26, Chesham United; 1928-29, Chesham United; 1933-34, Chesham United; 1947-48, Chesham United; 1950-51, Chesham United; 1964-65, Chesham United; 1966-67, Chesham United.

ATHENIAN LEAGUE SENIOR DIVISION

(Up to and including March 9th, 1968)											
	P.	W.	D.	L.	F.	A.	P.s.				
Cheshunt	23	12	5	6	38	25	29				
Carshalton	21	12	4	5	41	25	28				
Erith & Belv. ...	22	9	8	5	44	33	26				
Dorking	25	10	6	9	29	27	26				
Wembley	19	10	5	4	52	28	25				
Hertford	20	10	5	5	37	32	25				
Tilbury	18	9	5	4	39	20	23				
Croydon	20	7	9	4	35	22	23				
Letchworth	24	10	2	12	41	34	22				
Ware	22	8	6	8	33	37	22				
Wokingham	23	9	3	11	41	56	21				
Eastbourne Utd.	20	7	4	9	30	34	18				
Chesham	14	5	6	3	14	14	16				
Harlow	24	4	7	13	28	48	15				
Worthing	22	4	5	13	24	42	13				
Edgware	23	1	6	16	9	53	8				

Next time Fulham play away...

Support them.

Go to the game in a J. Davy hire car.

Travel in comfort. In your own time. You'll enjoy the match more.

Or take along your friends.

In a J. Davy self-drive Utilabrake. Very reasonable when everyone chips in.

Very reliable.

Your nearest J. Davy car hire branches:
Logan Place, Earls Court Road, W8.
Tel: 01-373 6000 and Parkside Service
Station, Putney Bridge Road, SW15
Tel: TROjan 3266



PYE RECORDS
PRESENTING HERE
AND IN YOUR HOME
A WORLD OF ENTERTAINMENT

FOR PERSONAL SERVICE
VISIT
MECCA MART
Groceries and Provisions
31, Greyhound Road, W.6
or PHONE 385 6677 for Delivery Service

For All Your Requirements
S. G. PURKISS & CO. LTD.
 Builders Merchants
 302/4, **MUNSTER ROAD,**
S.W.6.
 Tel. **FULham 2916**

We Supply the Public with a
**24-HOUR EMERGENCY
 PLUMBING SERVICE**
 at a **MEDIUM PRICE** whenever
 in difficulty please phone
385 5632-5774
E. H. Stennett

	RED	AMBER	GREEN	WHITE	PINK
RED	A Leytonstone Sutton Utd. D Liverpool Burnley	B Arsenal Wolves E Man. City Fulham	C Chelsea Leicester C. Newcastle U. Leeds Utd.		
AMBER	A Nottm. Forest Tottenham D West Brom. Everton	B Sheffield U. Sunderland E Birmingham Norwich C.	C Southampton West Ham F Blackburn R. Crystal Palace		
GREEN	A Blackpool Aston Villa D Carlisle Utd. Charlton A.	B Bolton W. Rotherham E Huddersfield Derby Co.	C Bristol City Portsmouth F Hull City Plymouth A.		
WHITE	A Ipswich T. Preston N.E. D Grimsby T. Oxford Utd.	B Brighton Mansfield T. E Northampton Oldham Ath.	C Gillingham Barrow F Coventry C. Man. Utd.		
PINK	A Stoke City Sheffield W. D Barnsley Workington	B Millwall Q.P.R. E Brentford Port Vale	C Shrewsbury Peterborough F Swansea T. Lincoln City		

FULHAM F.C. NEXT HOME FIXTURES

FOOTBALL LEAGUE

ARSENAL

Saturday, 23rd March
 Kick-off 3 p.m.

FOOTBALL COMBINATION

BRISTOL CITY

Saturday, 30th March
 Kick-off 3 p.m.

FOOTBALL LEAGUE

COVENTRY CITY

Saturday, 6th April
 Kick-off 3 p.m.

FOOTBALL LEAGUE

MANCHESTER UNITED

Good Friday, 12th April
 Kick-off 3 p.m.

After the Match call in at the
**Schooner Fish Bar and
 Restaurant**

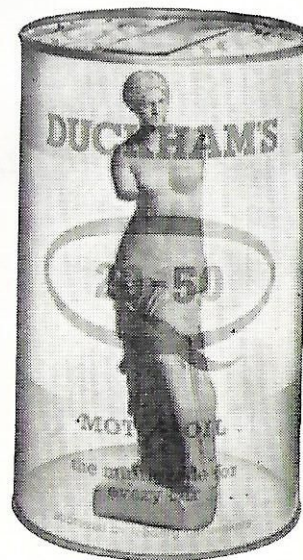
60-62, **FULHAM PALACE ROAD**
HAMMERSMITH,
LONDON, W.6.
RIVerside 2947

Phone : 385 4222-3

STENNETT CAR HIRE

(24 Hours Service)

297, **LILLIE ROAD,**
LONDON, S.W.6.



The oil with the perfect body

RECOMMENDED FOR ALL CARS
 FROM NEW AND FOR LIFE

For further information write to
 Duckhams Oils, Summit House, Glebe Way
 West Wickham, Kent. Tel: 01-777 8341

DUCKHAM'S **20-50** **MOTOR OIL**

FOR ALL TIMBER & D.I.Y.
 MATERIALS

The Fulham Timber Co.

188, Fulham Palace Road, S.W.6

FULham 2877

also

94, Falcon Road, S.W.11

BATtersea 1850

SAND, CEMENT, BRICKS, ETC.

Delivered in Large or Small
 Quantities Daily

PHONE : 01-385 2462

F. G. BALCH
 & Co., Ltd.

Estcourt Road, Fulham

BONNAMY SPORTS EQUIPMENT

Suppliers to

**FULHAM F. C., QUEEN'S PARK RANGERS,
 BRENTFORD F. C., WEALDSTONE**
 and other League Clubs.

67, Warwick Road, Ealing, W.5
 Tel: EAL 1885

Stockists in the latest designs of Continental
 boots and clothing.

Minerva Footballs
 as supplied to Fulham F. C.

ARCHERS THE JEWELLERS

M.N.A.G. M.B.H.I.

Prop: E. R. Farrant,
 F.G.A.

802, **FULHAM ROAD**
S.W.6.

Opposite Bishops Park

**Watch, Clock &
 Jewellery Repairs.**
Pearls Restrung

World Cup & Football
 Charms

Tel.: REN 5834

